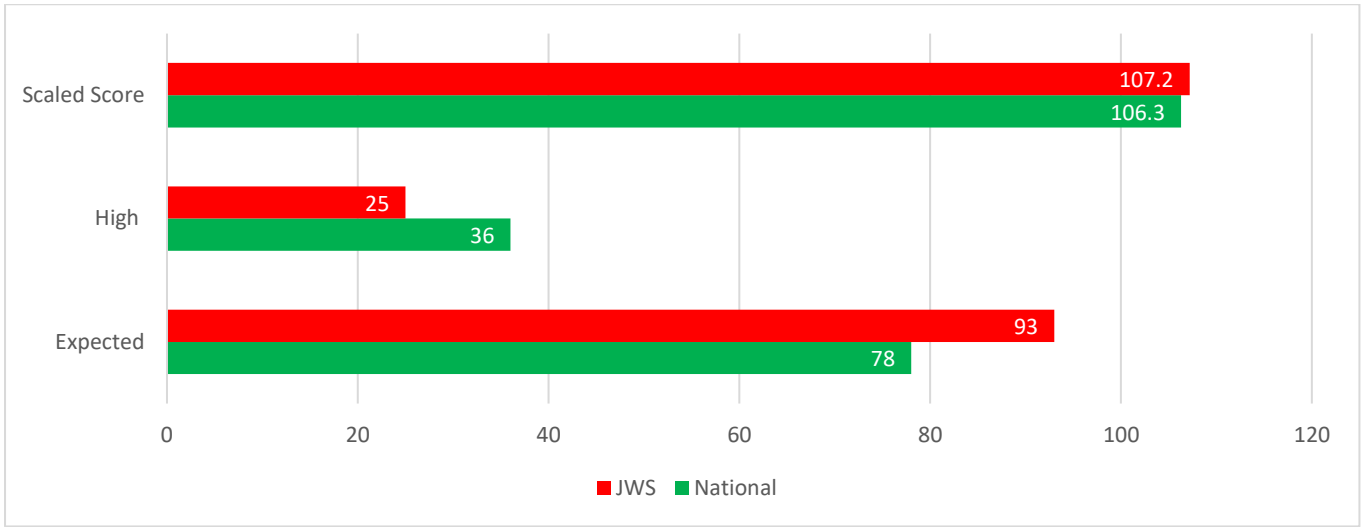


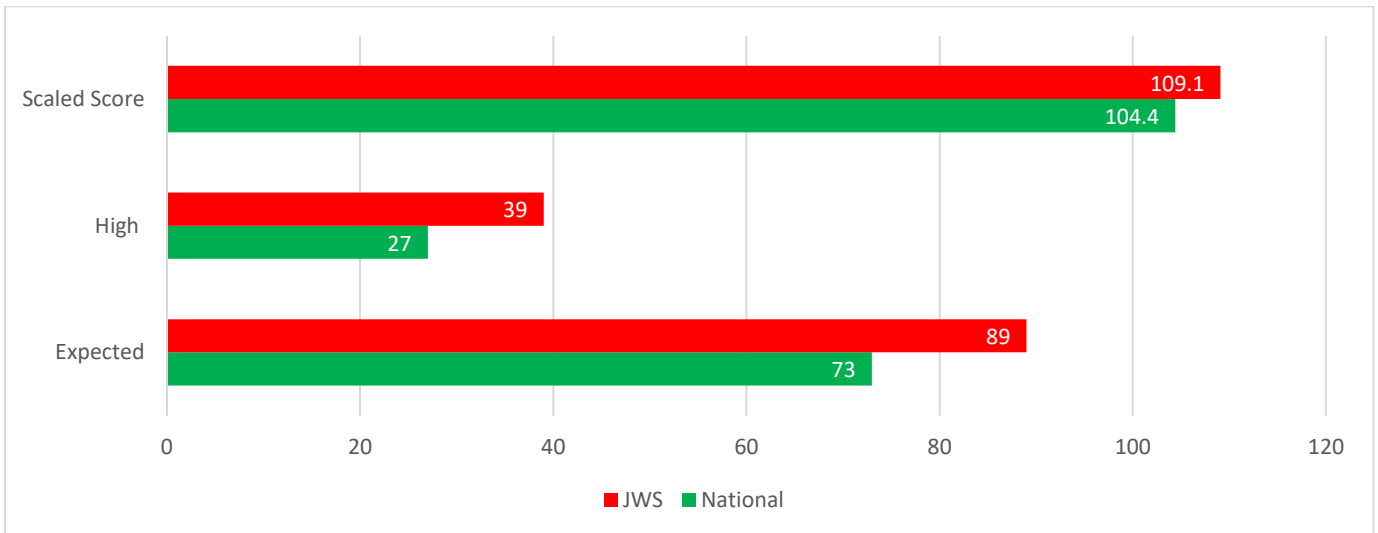
School Performance – John Wilkinson Primary School

Attainment 2019 – Key Stage 2

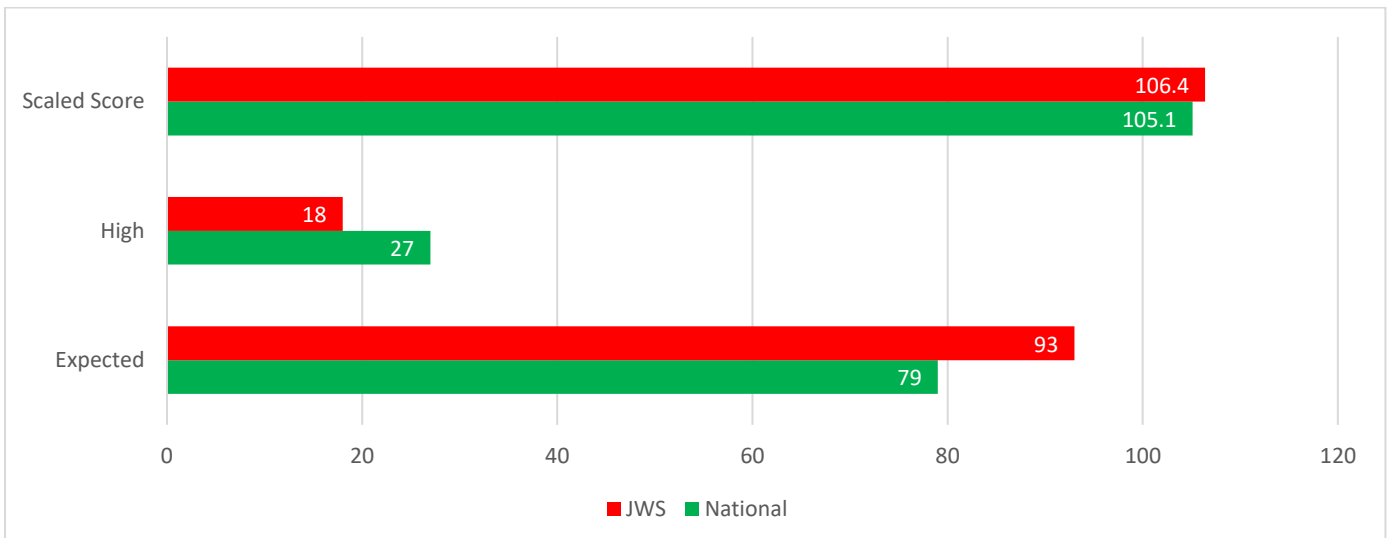
Grammar, Punctuation, and Spelling



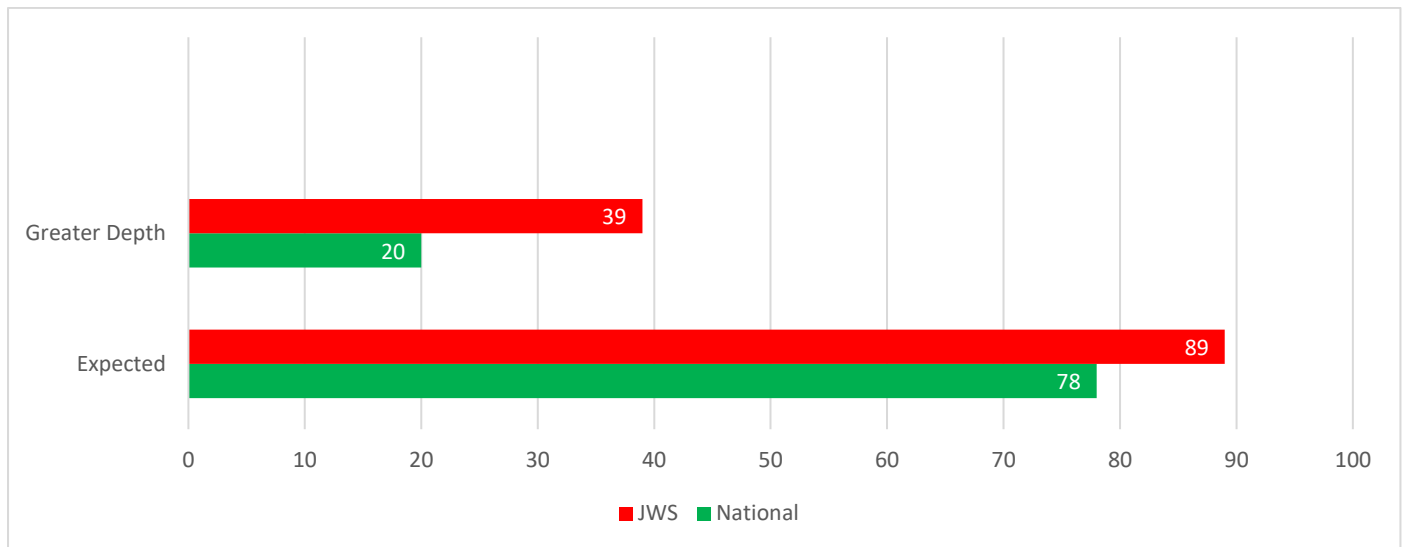
Reading



Mathematics



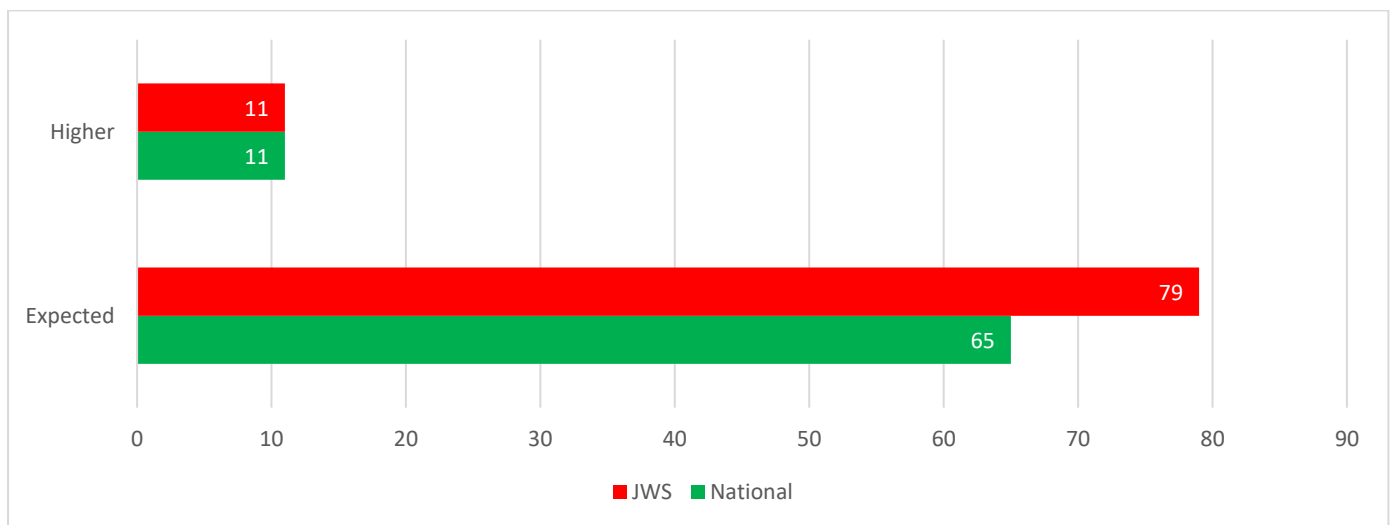
***Writing**



***This is based on teacher assessment**

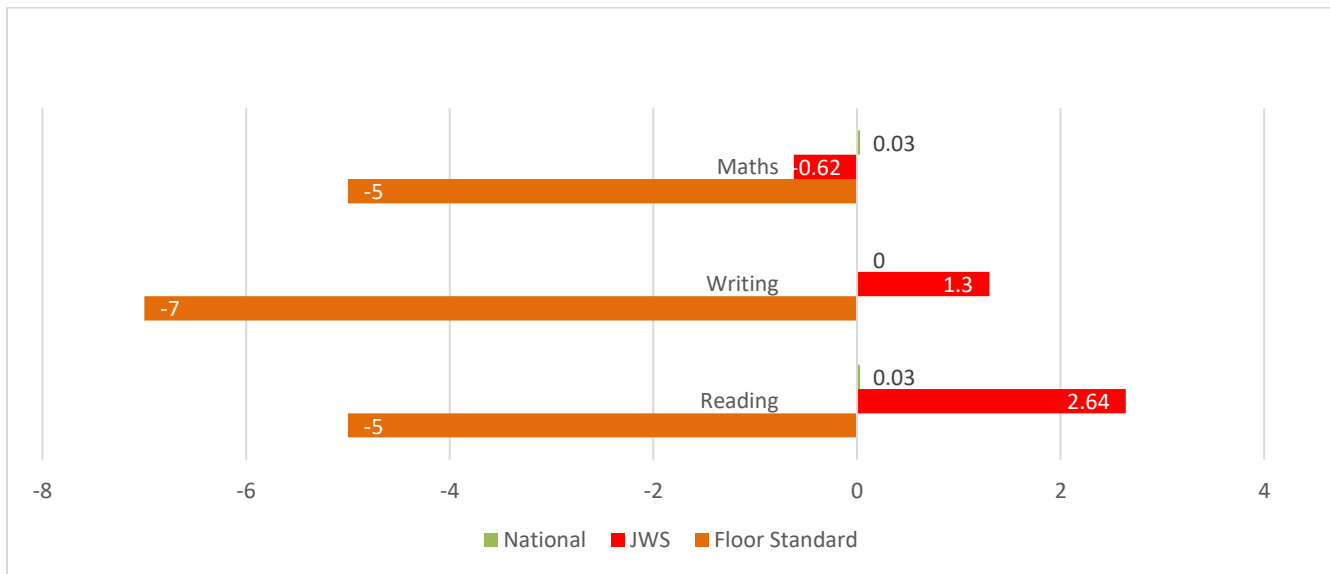
Reading, Writing, Maths

The proportion of learners achieving the expected standard (or above) in each subject (RWM)



Progress

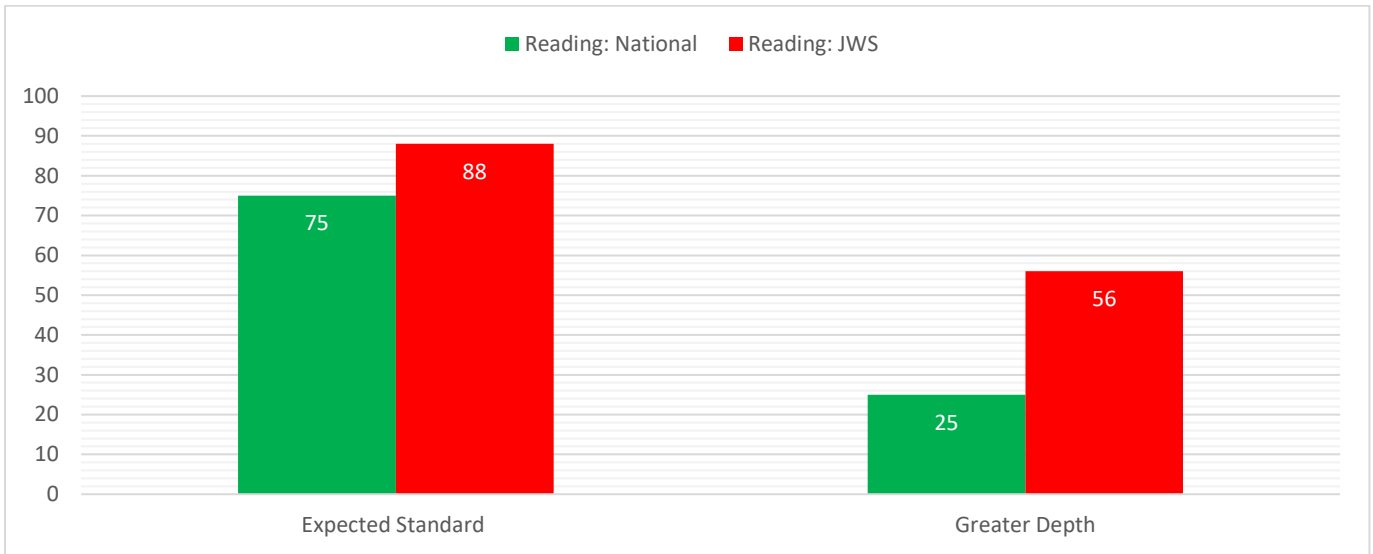
The following charts indicate the level of progress made by the cohort. A figure around (0) Zero is expected progress, negative numbers indicate less than expected progress and positive figures more than expected progress.



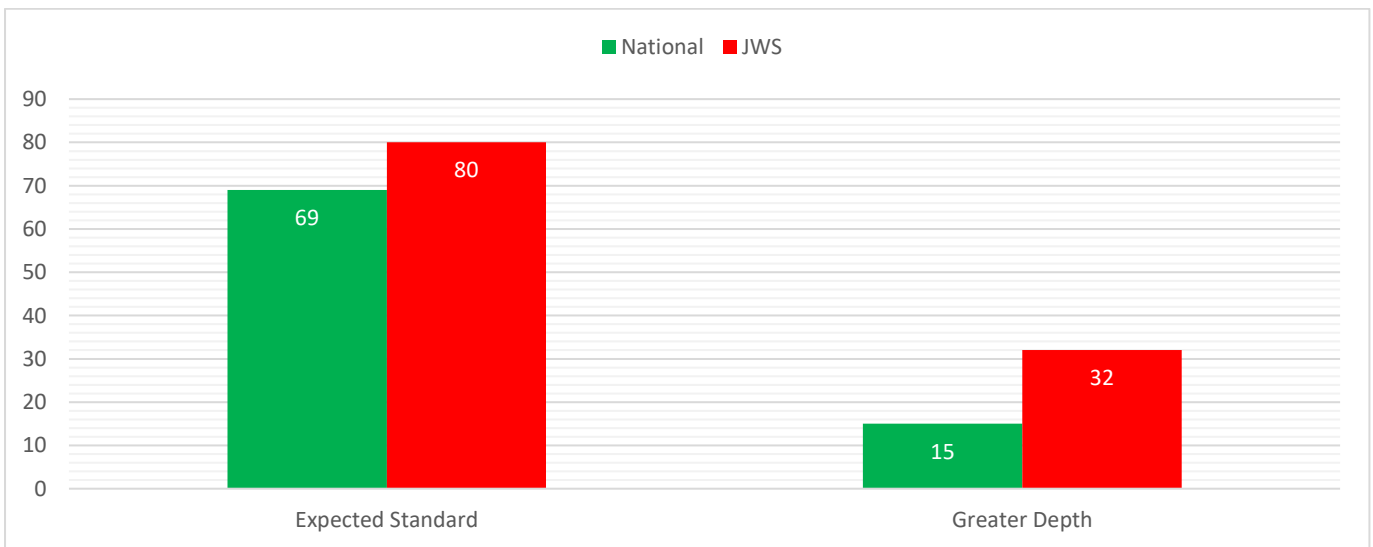
Commentary	Evaluation
<ul style="list-style-type: none"> • In most respects pupils attain above the national averages • Proportions of learners achieving higher score / greater depth exceeds NA in reading and writing • Floor standards have been met 	<ul style="list-style-type: none"> • Despite proportion of SEN learners this group have attained well at expected in all subjects at greater depth in writing and reading • Further work needs to be completed in maths particularly fractions • GPS: Spelling.

Key Stage 1

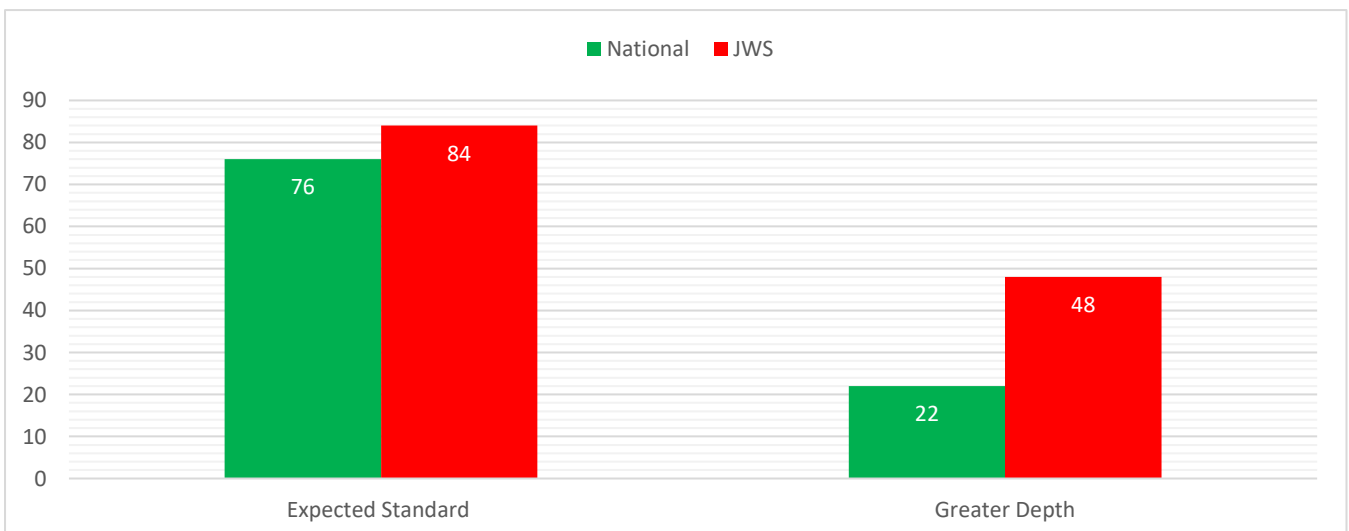
Reading



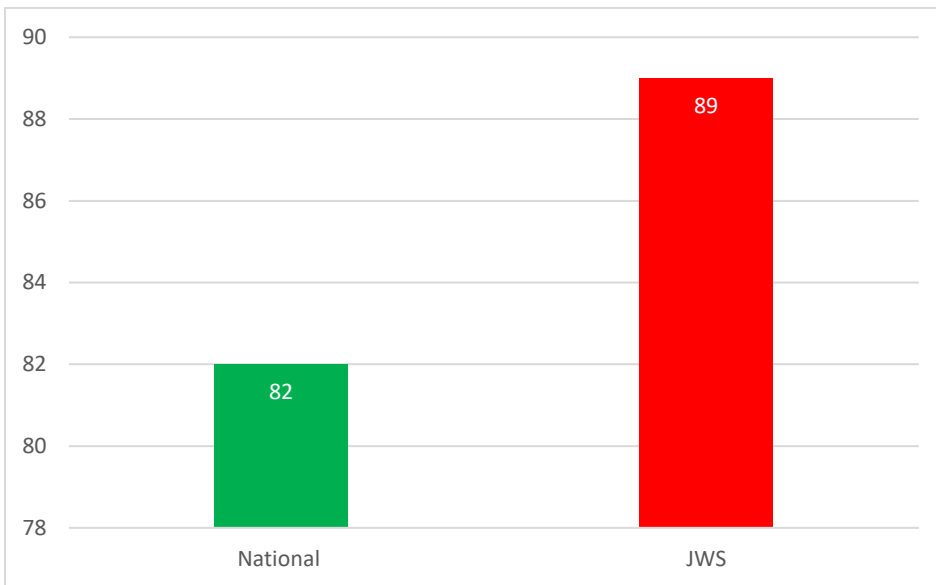
Writing



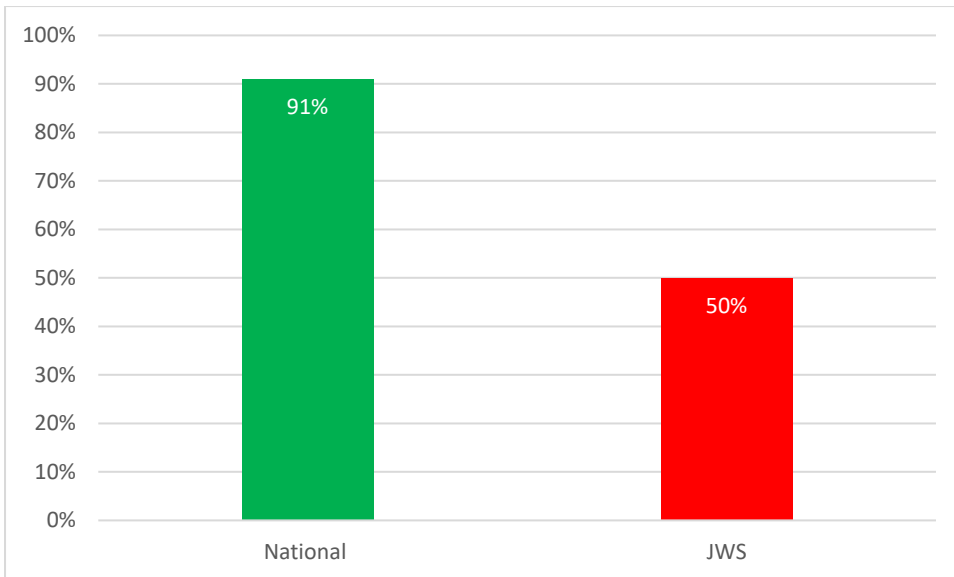
Mathematics



Phonics Year 1



Phonics Year 2 (Retake) – 4 pupils only



Commentary	Evaluation
<ul style="list-style-type: none">Phonics attainment exceeds NA constantly.	<ul style="list-style-type: none">Improved outcomes are as a result of targeted intervention

Progress – EYFS to KS1

	Early Learning Goals (2017)		Key Stage 1 – Year 2 (2019)	
	% Expected or Above	% Exceeding	Expected Standard	Greater Depth
Reading	91	39	88	56
Writing	82	22	80	32
Maths	87	35	84	48

This matrix compares the proportions at and exceeding the Early Learning Goals (ELG) in the Reading, Writing and Maths at exit from reception to the proportions reaching the expected standard (or above) and working at greater depth respectively at the end of KS1. 5 pupils (17.24%) joined us during Yr1 and 2. Key Stage 1 results are generally in line with end of foundation stage results.

Rec – Y2 Progress (2017-2019)	Rec - % achieving a good level of development	Y2 - % achieving expected+		
		R	W	M
	83	88	80	84

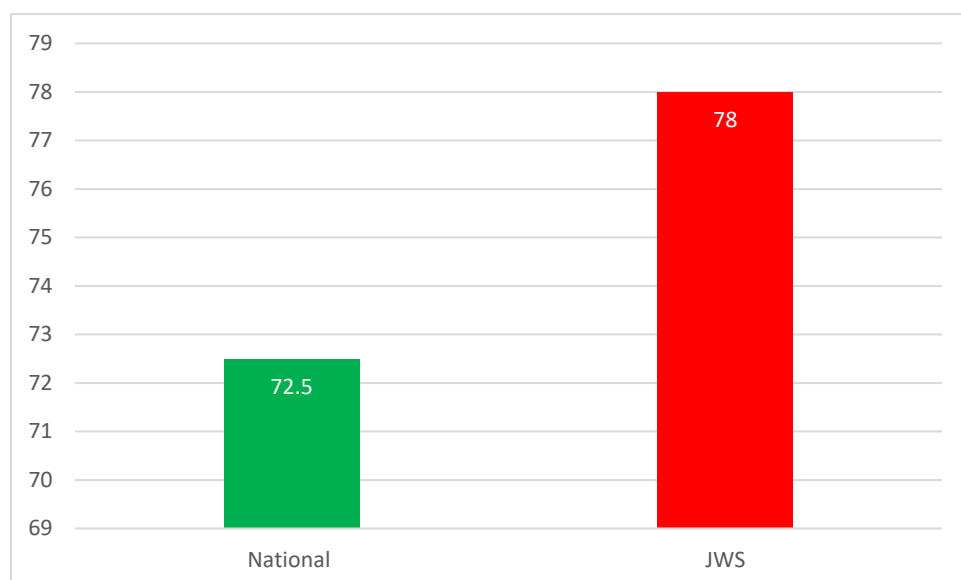
Proportions of pupils, in the cohort, achieving a good level of development and converting to an overall expected+ in RWM.

Commentary	Evaluation
<ul style="list-style-type: none"> Pupils exceed national rates for expected+ in all subjects and at greater depth At least expected rate of progress are indicated by the conversion rates from EY to KS1 	<ul style="list-style-type: none"> Good+ progress and attainment is achieved as a result of good or better teaching

Early Years and Foundation Stage (Reception) 2018

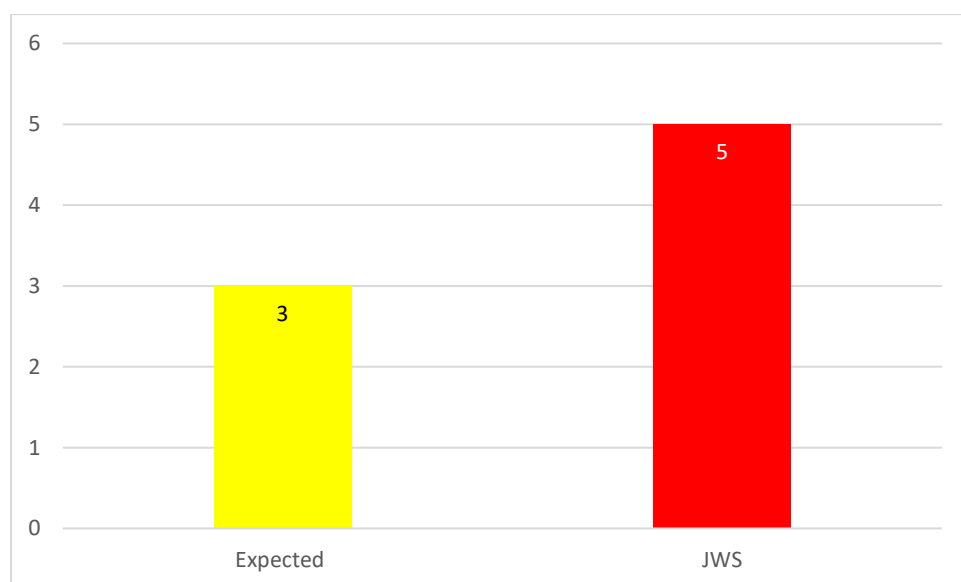
Attainment

Proportion of learners achieving a good level of development (%)



Progress

Progress (steps) made by learners from Entry to End of Reception



Commentary	Evaluation
<ul style="list-style-type: none">• The children at JS exceed the National Average of a good level of development• Progress exceeds national expectation	<ul style="list-style-type: none">• Children attain well by the end of reception, with all children making good or better progress• Data is used to target intervention